



# Mountain and Winter Driving

---

## Tips and Tricks

Presented by Kelly Baker

MGIO Emergency Response Coordinator/Trainer

In Collaboration with Eric Buckley, MGIO Director

October 6, 2022



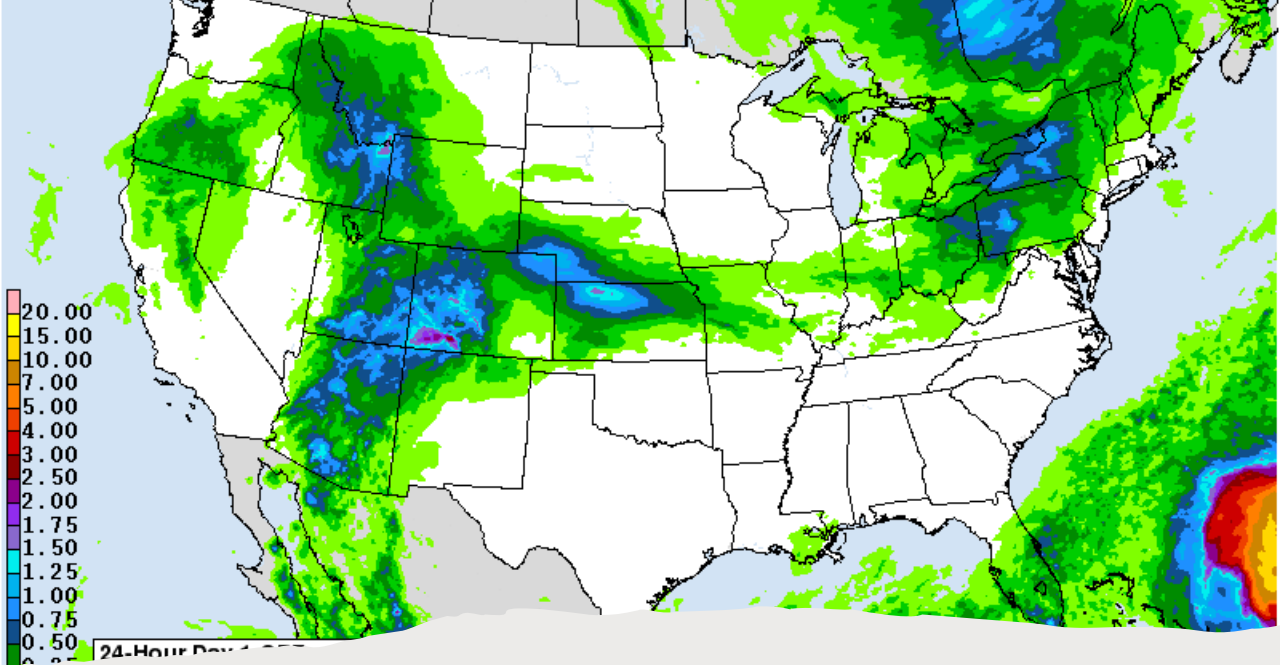


Get ready for some twists and turns!



## Today's Talking Points

- Know Before You Go
- Type of Vehicle
- Driving Conditions & Hazards
- Driving Rules
- Survival Gear
- Tips
- Lessons Learned
- Takeaways



Know Before You Go...  
But Expect the Unexpected

- Check Weather and Road Conditions prior to leaving
- Mountain Weather Forecast
  - <https://www.mountain-forecast.com/>
- Mount Graham Columbine Weather Station
  - <https://forecast.weather.gov/MapClick.php?lat=32.690243035492266&lon=-109.87358093261719&site=twc&unit=0&lg=en&FcstType=text#.YypZhHbMKUd>
- ADOT
  - <https://az511.gov/>

What kind of vehicle should I drive up the mountain in the winter?

---

- **Four-wheel drive**

- Make sure it is equipped with snow chains and survival gear
- Be familiar with your vehicle and how it operates. Do you know how to shift into 4WD? What are the limits of the vehicle?
- High clearance
- Rental vehicles: the operator is responsible to make sure it is equipped with all of the winter survival gear that is required

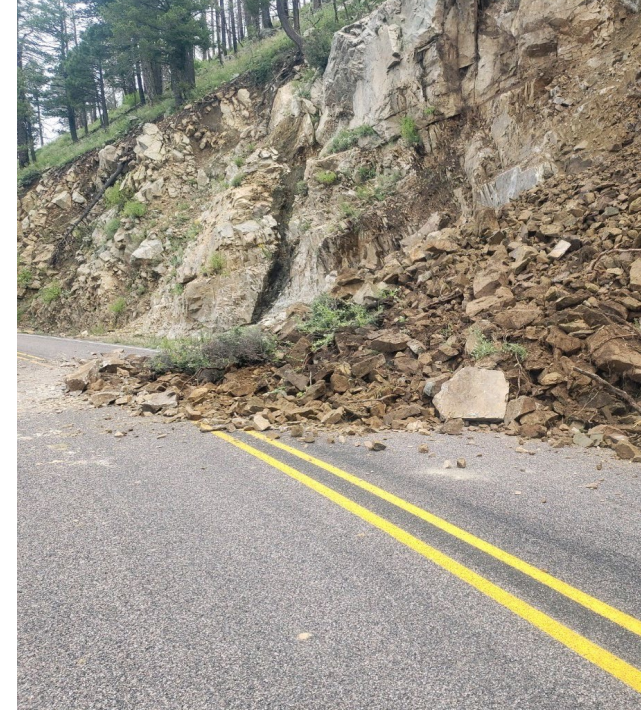


# How About Summer?

- Four-Wheel Drive/AWD
- High Clearance
- Equipped with Survival Gear



My GPS says  
there's a  
campground  
around here,  
somewhere...



## Driving Hazards

Snow/Blizzard Conditions

Ice/Black Ice

Fog

Rain

Washouts

Rock and Mudslides

Wildlife

# Navigating the Conditions

- Washboards
  - Slow down especially when approaching a curve to maintain control
  - Faster is not better
- Limited visibility caused by dust, fog, blizzard and rainy conditions
  - Slow down and give yourself more distance if you are following another vehicle
  - It may be necessary to pull over and wait it out
    - Get as far off road as possible
    - Turn off lights
- Obstacles in road such as traffic, potholes, rocks, branches and downed trees
  - Look ahead
- Narrow road not wide enough for 2 vehicles, ie Mount Graham access road
  - Stop
  - The vehicle going uphill needs to back down to a spot wide enough for the other vehicle to pass





# Navigating Curves

- Slow down and brake before entering curves and traveling downhill
  - Braking while in them reduces the ability to maintain vehicle control
- Don't drive downhill any faster than you would drive uphill
- Select lower gear while going downhill
- Watch for wildlife, other vehicles, bicycles, pedestrians
- Be aware of soft shoulders; they can pull a vehicle into the ditch or worse, cause a rollover





# Rules For Driving In The Snow

- Chain up properly.
- A plowed road may look wider than normal, but beware: the shoulders will be soft snow that will not support the weight of the vehicle
- Traveling after dark is highly discouraged. If it is necessary, please use the buddy system
- Make sure your two-way radios are working and stay in contact with someone
- Take your survival gear
- Slow down!

# What Should Each Vehicle Carry?

- List of all emergency telephone and radio contact numbers
- Fire extinguisher
- Pocket lighter or butane mini-torch
- Small shovel
- First Aid Kit
- Emergency Blanket per passenger
- Snow Chains
- Ice Scraper
- Bag of sand
- Tool kit: pliers, duct and electrical tape, screwdrivers, plastic warning sign, jumper cables, 20ft tow strap

# What Should I Bring?

- **Personal items to have with you:**
- Winter gloves (handy for putting on snow chains too)
- Heavy coat
- Hat
- Boots
- Extra supply of water and food
- NO flops, shorts or sleeveless shirts!





## Safe Mountain Driving Vehicle Tips

---

- Slow down. Speed will get you in trouble
- Make sure your fuel tank is full
- Tires are properly inflated
- Windshield wipers are in good condition and check wiper fluid



## Why Is This Important?

- **So, we can learn from past incidents and prevent new ones**
- Bumblebee encounter on Mount Graham
- Rollover on Mount Lemmon
- General public vehicle sideswiping a U of A vehicle

# What Should I Do If I Am In An Accident?

- If there are injuries, call 911
- Risk Management and Safety, Fleet Safety Policy, Number RM-002, sec 3.5 states: *All accidents involving a university vehicle or associated with a university activity (regardless of vehicle ownership) must be reported to RM&S and to the driver's supervisor or university management official.*
- <https://policy.arizona.edu/facilities-and-safety/fleet-safety-policy-summary>
- Remember: the driver has obligations to stop, render aid when it's necessary, make notifications, exchange info or leave info. Leaving the scene could be a criminal offense.

# Take aways

- Slow Down
- Look Ahead
- Be Prepared for Changing Conditions



You Never Know What Might Be Lurking Around the Next Bend





Questions????