



***Welcome to the
Mt. Graham International Observatory***

<http://mgio.arizona.edu>

Updated 9/17/15

The Mt. Graham International Observatory (MGIO) is operated under a special use permit with the U.S. Forest Service (USFS). To comply with that permit, all personnel accessing the MGIO site must read and sign the endangered Mt. Graham Red Squirrel refugium briefing.

The MGIO Base Camp is located at 1480 West Swift Trail, Safford, AZ 85546. A map is available on the home page of the MGIO website (URL listed above).

To insure smooth access to the observatories and to insure your safety during your MGIO visit, all personnel must check in at the Base Camp to:

1. Log their presence at the observatory (for safety reasons)
2. Acquire an observatory access road gate key
3. Acquire a radio (if vehicle doesn't have one)
4. Seek further instructions (such as weather information, radio instructions, etc.).

In this orientation packet you will find:

1. Observatory Check-In Procedures
2. MGIO Safe Driving Policy & Safety Bulletins
3. Security Information – University of Arizona Police Department
4. MGIO Organization Chart
5. Tips from the Custodial Department
6. Milepost Log to Mt. Graham International Observatory
7. Radio Instruction Sheet & Radio Unit assignment list
8. Mt. Graham Red Squirrel Briefing
9. Emergency Contact Phone Numbers

MGIO Duty System:

To respond to unusual situations, Mt. Graham International Observatory has a duty system where a MGIO employee is on call around-the-clock. They can be contacted through the duty cell phone #928-965-3100. This is to address any problems on site such as utility problems, snow removal, or maintenance issues.

For other problems contact the appropriate Observatory Manager:

Organization	Name	Radio ID	Phone
LBT:	John Little	Unit #75	(928) 428-4286
MGIO:	Shane Olsen	Unit #31	(928) 428-2739
SMT/ARO:	Tom Folkers	Unit #98	(520) 626-7837
VATT:	Bob Peterson	Unit #12	(520) 621-5136

Or see the emergency contact list for additional phone numbers (page 14 of this document).

Base Camp:

Working hours: 7:30 AM – 4:00 PM
Monday through Friday except holidays

Phone number (928) 428-2739

If you will be visiting MGIO during holidays, weekends or after hours please contact the Base Camp staff during regular working hours to make special arrangements to pick up keys, and radio(s) during Base Camp closure periods.

MGIO Website:

<http://mgio.arizona.edu>

Observatory Check-In Procedures

Keyless Entry

The Base Camp is accessed via keyless entry through the personnel gate and the front door to the office. ***You must have the proper code to enter the personnel gate and the office.*** Access road gate keys, and radios are located inside the MGIO office. Should the batteries fail in the keyless entry system, there is a telephone and a facility key for the back door located in the lock box outside the office. The key is attached to a big washer (see picture). Please replace the key in the lock box for the benefit of the next person.

Typically, those going to MGIO are to enter the office via the keyless entry, log in/out (or move their brass tag), and pick up or drop off the radio and access road key.

Observatory Register

For safety reasons we need to know who is on the mountain and where employees, observers, visitors and contractors are located. A registration log located by the door on the podium is where one should log their presence (or absence) on the mountain. For those personnel who have been issued a permanent radio call sign, a “brass tag” system is used instead of the register. The tag board has brass tags that have the employees radio unit call number punched into the tag. They can sign in or sign out by “moving their brass” to the appropriate column on the MGIO Tag Board.

Red Squirrel Refugium Briefing

Once you have entered the office, as required by the Federal Endangered Species Act, all visitors and employees must read and sign the “red squirrel briefing”. The briefing is located next to the podium in front of the permit folder boxes.

Photos of the check-in system are included on the following pages.

Observatory Check-In Procedures



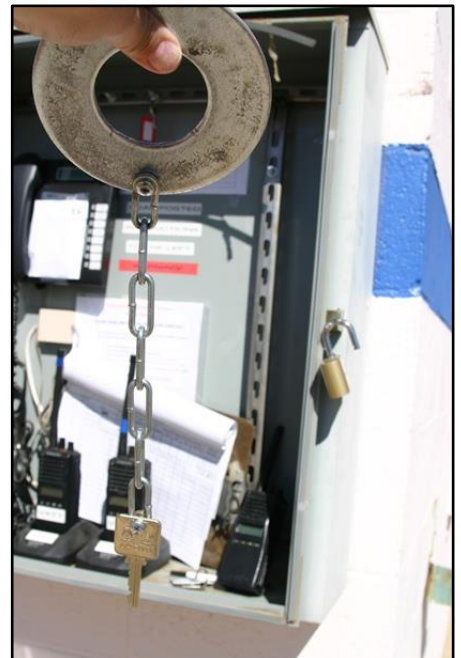
Keyless entry



Exterior Lock Box



Lock box open –
Phone and Facility Key





Observatory Check-In Procedures

Daily Permit Boxes,
Podium and Tag Board



MGIO SAFE DRIVING POLICY

The MGIO Council endorsed the following policy for all users of MGIO including staff, visiting observers and contractors. All new personnel that travel to MGIO are required to complete a safe mountain driving orientation session that can be completed on line and sign a statement that they understand their responsibility to drive safely on Swift Trail and the MGIO Access Road before they will be authorized to drive to the telescopes site. Completion of the safe mountain driving orientation is required of new employees. The orientation will include an introduction to MGIO policies and procedures and a Power Point presentation concerning mountain travel and driving skills required for safe operation on a high altitude mountain road. Individuals may printout materials included in the orientation. A "refresher" package will be made available so that each Observatory Director may require an individual to review the safe mountain driving information to continue driving privileges to a telescope site. Current staff is encouraged to review the safe driving material.

The MGIO Base Camp Office provides a "brass tag" sign in and out system for those persons assigned a permanent radio call sign. All personnel that are frequent visitors and have an assigned radio call sign are required to use the brass tag sign in and out procedure. Visitors who do not have a "brass tag" assigned to them will sign in at the podium registration log and obtain a radio and or keys as they have in the past. In addition, the Office will provide a message board in the near vicinity that will include current safety information, hazardous road conditions, policy changes, weather information, radio communication information and general information regarding MGIO.

After dark travel is highly discouraged to and from the site and will be made only when absolutely required. For after dark travel, it is strongly recommended that a buddy system be used which may include a convoy of vehicles or a minimum of two people in one vehicle. For after dark travel it is required: 1. A fully operational two-way radio and to be in contact with another local person for the entire time of the travel between the site and Base Camp. Each Observatory control room will have a two-way radio to assist with contact in after dark travel. 2. From November 15 to April 15, when the USFS closes Swift Trail to public travel, four wheel drive vehicles will have with properly sized snow chains available for all four wheels (with chains mounted to the tires if driving in snow). 3. A survival pack as defined in the Steward Observatory Safety Manual, Policy #42 will be available in each vehicle.

Penalties are under the control and direction of each Observatory Director for staff reporting to the assigned research facility and will include: 1. First infraction, a verbal warning and the individual must attend a driver's safety class. 2. Second infraction, a written warning including notation in the annual performance review. 3. Third infraction, revocation of driving privileges to the site for three months and placed on probation status. Any penalty will last for one year after the most recent incident. A significant and serious infraction may supersede the policy above and may result in loss of all driving privileges and subject the individual to other penalties up to and including discharge from employment.

MGIO SAFETY BULLETINS

Winter Mountain Driving

During the winter the road surface can become extremely hazardous covered in "black" ice or packed snow. The road is maintained by Arizona Department of Transportation (ADOT) and the MGIO maintenance crew. Typically ADOT takes care of the paved road surface and MGIO takes care of the unpaved road (last 8 miles to the site). **Be aware that the snow plowing operation produces "soft" shoulders on both sides of the road surface.** The road may seem wider because of the soft shoulders so to avoid being stuck stay "centered" on the road surface and be alert to oncoming traffic. During the winter please check with the Base Camp to ascertain road conditions. When weather advisories are critical, an up to date weather and road advisory will posted at the "sign-in" register in the Base Camp Office.

Snow Plowing Procedures

During winter when snow and ice are on the road surface, the Arizona Department of Transportation (ADOT) will plow the paved road (~20 miles). MGIO personnel plow the unpaved road into the observatory site (~8 miles). When plowing, for personnel and equipment safety, ADOT will normally have the road blocked. ADOT personnel will open the gate and escort you through the snow plow closure area at least every 30 minutes, so during snow plowing operations, a short wait may be necessary on your travel to or from the MGIO site. Once you reach a gate closure, contact the Base Camp (radio Unit 30), and they will alert ADOT to your presence at the closed gate. Be sure to continue to monitor radio traffic on "Channel 1" (Motorola radios) or "MGIO Rptr" (Kenwood and ICOM radios). "Rptr" is an acronym for "repeater."

MGIO SAFETY NOTICE, continued

Snow Plowing Procedures, con't

During snow plowing operations when you leave the MGIO site or when you are heading toward the site and pass through the gate at the end of the paved road please advise all MGIO personnel via radio that you are traveling on the unpaved road.

If you should come upon a snow plow – **STOP** - giving them wide berth (>100 feet) until you have made **positive** contact with the plow driver – **the driver will permit you to proceed when the plow has been stopped and safely secured.**

Ice and Snow Fall from Building Roofs

During winter operations at the telescope site, be aware of snow and ice accumulation on all building roofs and in the vicinity of the microwave antenna located at the south end of the Vatican Observatory building. The snow and ice may slide off, causing damage to vehicles parked near the structures. Be cautious around the Submillimeter Telescope, as the roof panels are opened, the ice and snow pack will slide off into the area around the SMT. **Any personnel walking near the outside perimeter of any of the buildings or near the microwave antenna could be endangered by falling snow and ice. Be alert!**

For your safety, check with the personnel in the appropriate building prior to working outside the perimeter of that building (this includes all work – security checks, reading utility meter, etc.) Also be aware at all times of the enclosure opening status when you are working near the perimeter of the building. Snow and ice sliding off the roof or from the microwave antenna can be life threatening.

MGIO SAFETY NOTICE, continued

Emergency Transport Vehicle

MGIO has a 4x4 Suburban, equipped with snow chains, basic first aid supplies, and radio communications. It is available on site to transport an incapacitated person to meet an ambulance, deliver the person to a helicopter pick-up point or make a complete trip to a medical facility. The medical kit in the transport vehicle is composed of blood pressure and heart/lung monitoring equipment, oxygen supply, backboards, cervical collars, splints and basket stretchers.

Note: There is not enough vertical space in the Suburban emergency transport vehicle to accommodate a patient with cardiopulmonary problems which require cardiopulmonary resuscitation (CPR).

Emergency Response Contingency Plan

MGIO has an Emergency Response Contingency Plan. The Plan covers a number of contingencies at the MGIO site such as chemical spills, hazardous materials, fire, and evacuation guidelines. Each building at MGIO has a copy of this plan found in a 3-ring binder. The plan is also listed on the MGIO website at:

<http://mgio.arizona.edu/ERCP/2010.pdf> (To be updated 10/1/16 BA)

Please read the plan as time allows. It contains emergency instructions, contact names and phone numbers.

MGIO updates the Contingency Plan every two years.

If you have any questions regarding the Emergency Response Contingency Plan please contact the Base Camp at 928-428-2739.

Mt. Graham Unit

Police Officers from the University of Arizona Police Department (UAPD) have statewide police authority and are the primary law enforcement responders on all University of Arizona property at the Mt. Graham International Observatory (MGIO) in Graham County. Officers work in conjunction with other law enforcement agencies to provide law enforcement services at MGIO and other areas of Mt. Graham. UAPD Officers assigned to the MGIO Unit also provide emergency medical services (EMT), and fire suppression support as needed.

Radio Designators

The UAPD MGIO Unit consists of four Police Officers who are designated as "STAR" units (e.g. STAR 2 thru 5,) on the radio. They can be contacted either via the MGIO radio or by telephone in their office (928) 348-0001.

Office Locations

The UAPD MGIO Unit maintain two offices:

- Steward Observatory Base Camp facility, (1480 W. Swift Trail)
- Emerald Peak, centrally located as you arrive at the MGIO site.

In the event a police officer is not available via radio, call UAPD Dispatch at **520.621.8273**. To obtain assistance in the event of emergency call 9-1-1.

UA MGIO Property

The University of Arizona property includes:

- Steward Observatory Base Camp facility;, 1480 W. Swift Trail, Safford
- Emerald Peak observatory site, (MGIO), which includes the LBTO, SMTO, VATT and support structures within site area
- Access road/staging area
- Biology camp

Requirements to be Onsite

Any employee, worker or visitor to the telescope is required to:

1. Comply with state and federal laws, and rules and regulations of the University of Arizona and Arizona Board of Regents.
2. Report crimes, violations of rules/regulations, serious personal injury, damage to University property/facilities, suspicious activity/people and dangerous animals at the MGIO site, Base Camp or Biology Camp immediately to UAPD.
3. Secure buildings, doors, pad locks, gates, property, or other securing devices/facilities use.
4. Follow instructions from UAPD officers.
5. Report vehicle accidents involving any injury or damages
6. Consumption of alcoholic beverages is permitted only within the designated living areas, (not defined as work centers), of the LBT, SMT, and VATT observatories, and by only those who are at least 21 years of age.

Weapons at MGIO

Purpose and Summary:

Arizona Board of Regents Policies 5-302 and 5-303 prohibit the use, possession, display, or storage of any weapons, explosive device, or fireworks on the University of Arizona campus and on all land and in all buildings owned or under the control of the University of Arizona on behalf of the Arizona Board of Regents, except as provided in ARS §12-781. No concealed carry permit exempts a person from this policy.

If any person requests an exemption from this policy, the Chief of Police of the University of Arizona Police Department has been empowered to review and grant any such requests.

Scope:

This policy is enforceable against all University of Arizona employees, students, and visitors on the University of Arizona campus and on all land and in all buildings owned or under the control of the University of Arizona.

Exceptions to this policy include

- Peace officers certified by the State of Arizona and currently employed by an Arizona law enforcement agency performing official duties.
- Peace officers certified by the State of Arizona in an off-duty capacity and currently employed by an Arizona law enforcement agency.
- Any law enforcement officer working under his/her color of authority.
- Weapons used in authorized academic programs for which prior approval has been obtained from the Dean or Department Head, Provost, and Chief of Police or their authorized representatives.
- Any other activity that has been given prior written approval by the Chief of Police and authorized University representative.

Definitions:

For the purpose of this policy the following definitions will apply.

“Explosive”: Any dynamite, nitroglycerin, black powder, or other similar explosive material, including plastic explosives; or any breakable container that contains a flammable liquid with a flash point of 150 degrees F or less and that has a wick or similar device capable of being ignited.

“Fireworks”: Any fireworks, firecrackers, sparklers, rockets, or any propellant-activated device whose intended purpose is primarily for illumination.

“Weapon”: Any object or substance designed to inflict a wound, cause injury, or incapacitate, including without limitation all firearms, BB guns, air guns, pellet guns, switchblade knives, knives with blades five inches long and longer, and chemicals such as mace, tear gas, or oleoresin capsicum (i.e., pepper spray), but excluding normally available over-the-counter self-defense repellents. Chemical repellents labeled “for police use only” or “for law enforcement use only” may not be possessed by the general public.

Policy:**Violations**

The chief administrative officer, or an officer or employee designated by the chief administrative officer to maintain order, may order a person to leave the property of an educational institution if the officer or employee believes that the person is committing any act or has entered the property with the purpose of committing any act that disrupts the lawful use of the property by others at the educational institution.

Violations of ABOR Policies 5-302 and 5-303 of the Code of Conduct are enforceable against all University of Arizona employees, students, and visitors. Any use, possession, display, or storage of a weapon, explosive device, or fireworks on the property of the institution after a reasonable request to remove the weapon, explosive device, or fireworks interferes with and disrupts the lawful use of the institution's property by others. Persons in violation of any lawful order to remove the weapon or to leave the property are subject to arrest by a peace officer for interference with or disruption of an educational institution, ARS 13-2911(A)(3).

Unless specifically authorized by law, a person may also be in violation of "misconduct involving weapons" by knowingly entering a public establishment or attending a public event carrying a deadly weapon on his or her person after a reasonable request by the operator of the establishment or sponsor of the event or agent to remove the weapon from the area, per ARS 13-3102 (A) (10). A properly worded sign will serve as a "reasonable request."

Enforcement

Violations of this policy by University students, faculty and staff will be considered misconduct, subject to disciplinary action in accordance with ABOR policy. Violation of this policy by members of the public may result in ejection from the property and/or confiscation of the weapon, dangerous instrument used, displayed or possessed. Violations may also result in arrest for applicable state statutes. Confiscated weapon(s) or instrument(s) may be sold, destroyed or otherwise disposed of in accordance with Arizona Revised Statutes. All seizures of prohibited items will be carried out within current policies regarding the processing of evidence.

Request for Exceptions

Any request to use, possess, display, or store a weapon on University property in connection with official University business must first be reviewed by the responsible Dean or Department Head. The Dean or Department Head may comment and shall forward the request to the Provost for review and comment. The request must then be forwarded to the Chief of Police of the University of

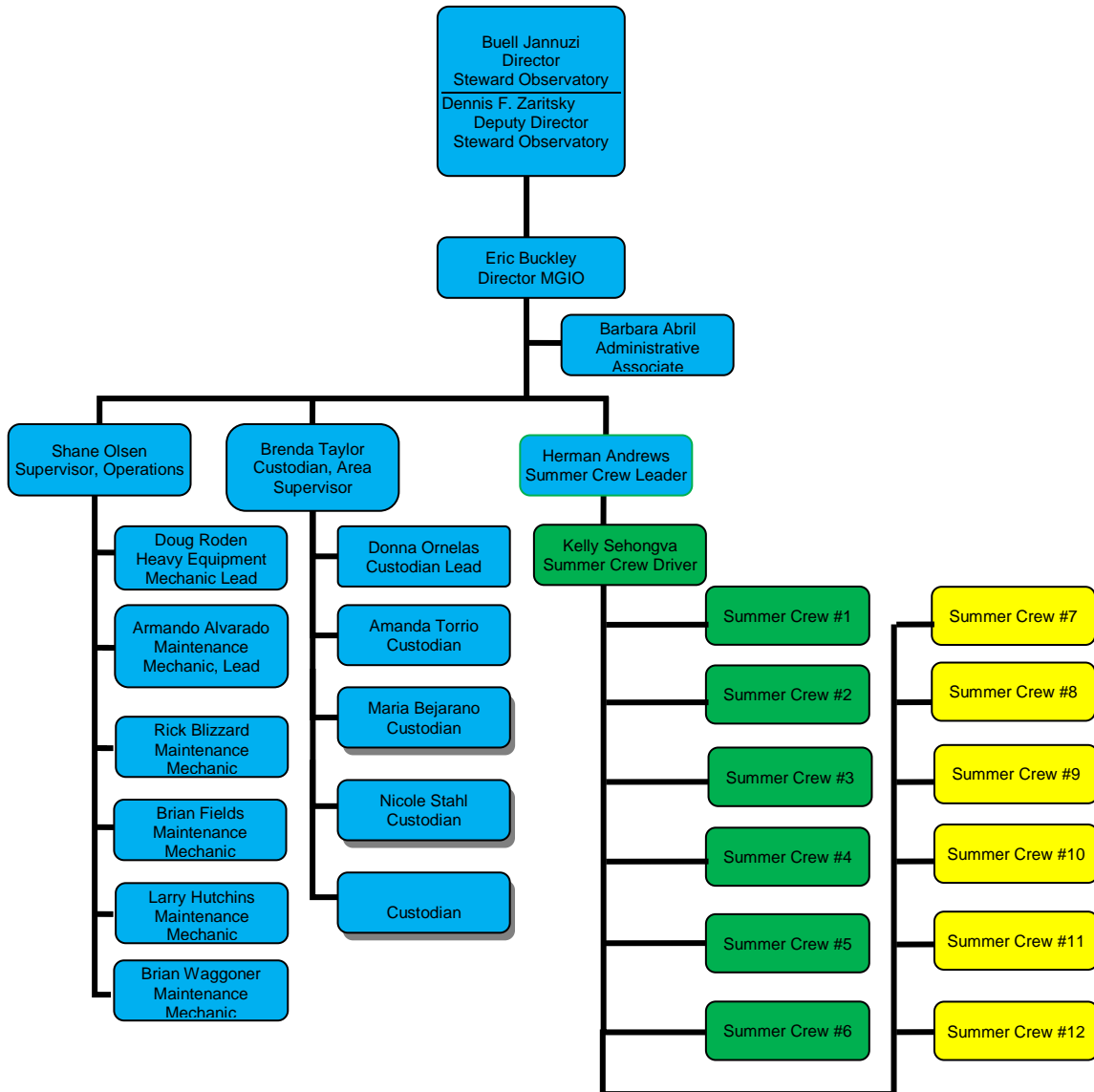
Arizona Police Department in writing at least ten (10) days prior to the intended date of such use, possession, display, or storage. The written request must

- Identify the purpose of the request.
- Identify how this request furthers the mission of the University.
- Identify the weapon.
- Identify the duration of the request.
- Identify a responsible person.
- Identify how the weapon will be secured.
- Identify how the weapon will or may be used.

The request will be evaluated by the Chief of Police, or his/her designated representative, and a written decision rendered within ten (10) working days. If the request is approved, the approval will include any conditions or restrictions necessary to require safety and consistency with the intent of the Arizona Board of Regents policy. If approval is given for an indefinite period of time it must be reviewed annually and renewed by the requestor. The University of Arizona Police Department will keep all approved requests on file and available for confirmation by police officers.

Mount Graham International Observatory

A division of
Steward Observatory
University of Arizona
August 2015





Welcome to MGIO

Tips from the Custodial Department

During your stay, you should expect to find a clean facility. Custodial Services are provided on site – Monday through Friday 8:00 a.m. to 3:00 p.m.

Base Camp hours are 6:00 a.m. to 4:30 p.m.

Telephone: (928) 428-2739.

Please leave a message after 4:30 p.m.

Emergency telephone numbers are posted near each telephone.

MGIO User's Guide

Please sign in with length of stay at the message center found in the entry area of each of the onsite buildings.

- **The Kitchen:** Equipped with pots, pans, baking pans, dishes, glasses, cups, flatware, and storage containers. Paper plates and Styrofoam cups, coffee, sugar, creamer, and basic condiments are also provided for your convenience.
- **Food:** Each user supplies their own food in ample amounts to accommodate their stay. Do not leave open food on counters. Store in containers, cabinets, or the refrigerator. (This is a precautionary effort to control pests). **It is the user's responsibility to prepare their meals and, as a courtesy to the next user, to clean up after themselves. Label your food with your name or initials and date.** At the end of your stay, discard all unwanted or cooked food. If you wish to leave it for another's use, label it "free". This applies to all food in cabinets or the refrigerators/freezers.
- **Water:** Use bottled water only for drinking, cooking, and to refill the ice trays. For SMT and VATT, bottled water refills are found in the entry area. At LBT, bottled water refills supplied by LBT personnel, are found in the kitchen. SMT and VATT - please notify Base Camp for potable water bottle refills.
- **Stove: DO NOT leave heating pans unattended.** Use lids or splatter screens while preparing food. Wipe up spills and

splatters.

- **Oven:** Cover what you are cooking with aluminum foil, or use a baking dish with a lid.
- **Microwave:** Cover what you are cooking with plastic wrap, a paper towel, a paper plate, or use a baking dish with a lid. **DO NOT use metal pans or aluminum foil in this appliance.**
- **All Small appliances:** Unplug or be sure that they are turned off.
- **Dishwasher:** Load and wash soiled dishes before you leave. Dishwashing supplies are found under the sink.
- **Rooms:** Linen, towels, pillows and blankets are stored in the closet. Extra linen and towels are stored in the linen cabinets.

At the end of your stay:

- LBT & VATT – please remove soiled linen from bed, soiled towels and place outside of your door. LBT, please vacate your room by 10:00 a.m.
- SMT – please place your sheets and towels in the hamper located in the building.

If linens are not removed, the room will be considered occupied.
Thank you for your thoughtfulness and consideration.

- **Laundry:** Services are only provided for bedding, linen and towels.
- **Trash:** Pickup is Monday through Friday. Over flow is to be placed in the large trash container found in the entry area. **DO NOT place any trash outside the building.**

The MGIO Custodial Department thanks you for your cooperation!

Brenda Taylor, Custodial Area Supervisor

Donna Ornelas, Lead Custodian

Maria Bejarano, Custodian

Amanda Torrio, Custodian

Nicole Stahl, Custodian

Natasha Allred, Custodian

Please email comments or suggestions to

brendab1@email.arizona.edu

SWIFT-TRAIL ROAD REFERENCE MARKERS

Arizona Highway 366 (Swift Trail) provides access to within two miles of the Mt. Graham International Observatory (MGIO). Landmarks and mile posts are located along Swift Trail and are listed below:

<u>Location</u>	<u>Milepost Marker</u>	<u>Miles from Base Camp</u>
MGIO Base Camp	114.7	0
Marijilda Canyon Road Intersection	116.8	2.1
4,000' Elevation Marker	117.5	2.8
Coronado Forest Boundary	118.5	3.8
FR-861 Road Intersection (Heliport)	119.5	4.8
FR-667 Road Intersection – USFS Work Site (5,000' elevation) ...	120.4	5.5
Noon Creek crossing	121.0	6.2
FR-329 Road Intersection – Angle Orchard	121.4	6.4
Round the Mountain Trailhead turnout	121.5	6.5
6,000' Elevation Marker	123.3	8.3
Wet Canyon Bridge	123.6	8.6
Arcadia Campground	125.5	10.4
Cluff Dairy Turnout (Heliport)	126.2	11.0
7,000' Elevation Marker	126.6	11.4
Turkey Flat (old general store)	127.9	12.7
Twilight Campground Road Intersection	128.4	13.2
8,000' Elevation Marker	130.1	14.9
Lady Bug Saddle (8,508' Elevation)	131.0	15.8
Utility Corridor	132.1	16.9
Hagens Point (The Kitchen)	133.3	17.9
9,000' Elevation Marker	134.5	19.1
Snow Flat Campground Road Intersection	135.2	19.8
Shannon Campground & Heliograph Peak Road Intersection	135.8	20.4
FR-507 Intersection (High Peak)	136.1	20.7
Swift Trail (Hwy 366) Main Gate	136.2	20.8
Treasure Park Road Intersection	137.0	21.6
Hospital Flat Campground (Alternate Heliport)	137.2	21.8
Grant Hill Intersection	137.8	22.4
Grant Creek crossing	139.2	23.6
Cunningham Campground	139.9	24.3
Moonshine Creek crossing	140.6	25.0
Post Creek crossing	141.4	25.8
Ft. Grant Vista Overlook	141.8	26.2
MGIO - Emerald Peak Access Road Intersection	142.3	26.7
Old Columbine - Bible Camp Road Intersection (Heliport)	143.2	27.6
Public Horse Corral	143.3	27.7
Soldier Creek Campground	143.7	28.1
Peters Flat	144.3	29.0
Chesley Flat	145.5	30.2
FR-287 Riggs Lake Road Intersection	147.5	32.2

MGIO Radio & Winter Travel Instructions

September 2015

Following are instructions for all MGIO radio users:

- Make sure that the radio is turned on and you have selected Channel #1 or "MGIO RPT" (MGIO radio repeater, located on Heliograph Peak). Do not use any other channels except in an emergency. The listing of channels is on the bottom of this sheet.
- On Motorola Radios: The small toggle switch (scan switch) on the top of the hand-held radio should be to the left for normal operation (position "A").
- When you arrive at the one-way MGIO access road and pass through the access road gate you will need to call up for traffic clearance. Example follows:

"One (?) vehicle(s) to proceed up the access road – downhill traffic advise." If there is no response you then say "One (?) vehicle(s) proceeding up the access road." You would use the same text for going downhill, just reverse the directions. Be aware, there may still be traffic on the access road. Drive with extreme caution. Be sure to "squawk" your radio identification code at the end of transmission – FCC regulation!

- During winter when snow and ice are on the road surface, the Arizona Department of Transportation (ADOT) will plow the paved road (~20 miles). MGIO personnel plow the unpaved road into the observatory site (~8 miles). When plowing, for personnel and equipment safety, ADOT will have the road blocked. ADOT personnel will open the gate and escort you through the snow plow closure area at least every 30 minutes, so a short wait may be necessary on your travel to or from the MGIO site. Once you reach a gate closure, contact the Base Camp (radio Unit 30), and they will alert ADOT to your presence at the closed gate. Be sure to continue to monitor radio Channel 1 (MGIO radio traffic). During snow plowing operations when you leave the MGIO site heading down or pass through the gate at the end of the paved road heading up please notify MGIO personnel via radio, alerting them that you are moving through the unpaved section of roadway.

RADIO CHANNEL NUMBERS:

CHANNEL DESCRIPTER

Motorola	Kenwood & ICOM	
Motorola Radios Channel 1 through 16	1 MGIO RPT	(MGIO Repeater Heliograph Peak) PRIORITY CHANNEL
	2 MGIO TA	(MGIO Repeater Bypass – limited range)
	3 MGIO LOC	(MGIO Simplex Communications)
	4 GCSO 1	(Graham County Sheriff #1)
	5 GCSO 2	(Graham County Sheriff#2 Repeater Heliograph Peak)
	6 ADOT RPT	(Arizona Dept of Transportation Repeater Heliograph Peak)
	7 ADOT LOC	(Arizona Dept of Transportation Simplex Communications)
	8 USFS RPT	(Forest Service Heliograph Peak Repeater)
	9 USFS WPK	(Forest Service West Peak Repeater)
	10 USFS LOC	(Forest Service Limited Range)
	11 USFS NET	(Forest Service Fire NET)
	12 KPNO	(Kitt Peak National Observatory Mountain Operations)
	13 SO-FLWO	(Steward Observatory Operations)
	14 FLWO	(SAO- Mt. Hopkins Operations)
	15 STATE	(Arizona Emergency)
	16 USA	(National Emergency)
	17 NWS RPT	(National Weather Service)
	18 SW AMB	(Southwest Ambulance)

MT. GRAHAM INTERNATIONAL OBSERVATORY

Radio System Unit Assignments

Revised 11/16/15

Unit #	Assigned to:	Unit #	Assigned to:	Unit #	Assigned to:
	Tucson Admin/Base Station	80	A.R.O. 10-M Telescope		LBT (con't)
10	Buell Jannuzi	80	Visitor (site)	75	John Little
11	Eric Buckley	81	Lucy Ziurys	75-Alpha	Michael Wagner
12	Bob Peterson	82		75-Bravo	Bonnie Ferguson
13	Barbara Abril	83	Martin McColl	75-Charlie	Terry Forsyth
20	Kitt Peak Base	84	Mark Metcalfe	75-David	Raymond Reyes
21	Bill Wood	85	David Forbes	75-Echo	Richard Hansen
22	Gary Rosenbaum	86	Robert Moulton	75-Foxtrot	John Prothro
23	Joe Hoscheidt	87		75-Golf	Kevin Newton
30	Safford Base (Barbara)	88	Vince Blair	75-Hotel	Bruce Bingham
31	Shane Olsen	89	SMT0 Tucson (Tom Folkers)	75-India	Jared Schuh
32	Armando Alvarado	90	Sean Keel	75-Juliet	Chris Bolyard
33	Brian Waggoner	91		75 Kilo	Jeff Urban
34	Douglas Roden	92		75-Lima	TommyLee Ison
35	Richard Blizzard	93	Eugene Lauria	75-Mike	James Dougherty
36	Brian Fields	94	Bob Freund	75-Nancy	Leroy Durham
37	Larry Hutchins	95		75-Oscar	Jonathan Reidhead
38	Brenda Taylor	96	George Reiland	76	Dave Ashby
38-Bravo	Donna Ornelas	97	Patrick Fimbres	76-Alpha	Michael Gardiner
38-Charlie	Amanda Torrio	98	Tom Folkers	76-Bravo	
38-Delta	Maria Bejarano	99	Christian Holmstedt	76-Charlie	Mike Gusick
38-Echo	Natasha Allred			76-Delta	James Howard
38-Foxtrot	Nicole Stahl	70	LBT	76-Echo	Gene Holmberg
39	BB Andrews	70	Christian Veillet	76-Foxtrot	Jim Wiese
39-Alpha	Kelly Sehongva	70-Alpha	John Hill	76-Golf	Robert Reynolds
40	Mt. Lemmon Base	70-Bravo		76-Hotel	Conrad Vogel
41	Jim Grantham			76-India	Jonathan Kern
42	Steve Bland	71		76-Juliet	James Riedl
43	JD Berryman	71-Alpha		76-Kilo	Dan Cox
50	Biologists	71-Bravo		77	Julian Christou
51	John Koprowski			77-Alpha	Doug Miller
52	Vicki Greer	72	Subcontractor	77-Bravo	Heng Zuo
53	Melissa Merrick	72-Alpha		77-Charlie	Greg Taylor
54	Calebe Mendes	72-Bravo		77-Delta	Julian Christiou
55	Amanda Veals			77-Echo	Guido Brusa
56		73	Douglas Summers	77-Foxtrot	Michael Lefebvre
56-Alpha	Theresa Huckleberry	73-Alpha	Michele DeLaPeña	77-Golf	Gustavo Rahmer Bass
56-Bravo	Samantha Springs	73-Bravo	Chris Biddick	78	Mark Wagner
57	Kendell Bennett	73-Charlie		78-Alpha	Dave Thompson
58		73-Delta	Tom Sargent	78-Bravo	Olga Kuhn
59	Jonathan Derbridge	73-Echo	Dan Cox	78-Charlie	Michelle Edwards
59-Apha	Allie Burnett	73-Foxtrot		78-Delta	Barry Rothberg
		73-Golf	Kellee Summers	78-Echo	Steven Allanson
60	Vatican Obs. (Emer. Peak)	73-Hotel	Igor Sola	78-Foxtrot	Geno Bechetti
61	Paul Gabor	73-India		78-Golf	David Gonzalez Huerta
62	Michael Franz	73-Juliet	Stephen Hooper	78-Hotel	Al Conrad
63	Gary Gray	73-Kilo	Xianyu Zhang	78-India	Andrew Cardwell
64	Technical Division	73-Lima		78-Juliet	Shane Walsh
65	Ken Duffek			78-Kilo	Jennifer Power
66	Jose Funes	74	ETS	78-Lima	Elliott Soldeid
67	Guy Consolmagno	74-Alpha		78-Mike	John Morris
68	Rich Boyle	74-Bravo			
68-Alpha	Kikwaya Jean Baptiste				
69	Chris Corbally				
Star Units	UAPD			79	Visiting Teams
Command 2	Robert Sommerfeld			79-Alpha	Arizona
Star 2	Ron Smallwood			79-Bravo	LBTB/Germany
Star 3	Jerry Garcia			79-Charlie	INAF/Italy
Star 4	Wade Boltinghouse			79-Delta	Ohio State
Star 5	Lance Lines			79-Echo	Research Corporation

MT. GRAHAM RED SQUIRREL BRIEFING

The endangered Mt. Graham red squirrel is protected by the Federal Endangered Species Act of 1973, as amended. It is illegal to "take" (this means to harass, harm, pursue, hunt, shoot, wound, kill, trap, capture, or collect, or to attempt to engage in any such conduct) individuals of this species. This includes touching and feeding. If anyone working on the Mt. Graham International Observatory project "takes" (as defined above) a Mt. Graham red squirrel they will be subject to prosecution under the Endangered Species Act.

Report all dead or wounded squirrels to the first available Forest Service official. The Forest Service will report all dead or wounded squirrels to the US Fish and Wildlife Service (USFWS). Locations of dead squirrels will be immediately reported to the Forest Service so that the dead squirrel can be collected and preserved for study.

There is some concern that the squirrels could become dependent on human food, which in turn may reduce survival. Dispose of your trash in appropriate containers provided for that purpose.

There are Mt. Graham red squirrels near many Pinaleño Mountains roads. The squirrels do cross roads, so drive slowly and carefully to avoid hitting any Mt. Graham red squirrels.

MGIO SITE REQUIREMENTS

I have read and understand the Site requirements and the conditions under which they are issued:

- I will remain inside the clearing limits of the MGIO facilities (delineated by a yellow perimeter rope).
- I will not go beyond the clearing limits (boundaries) of the two-mile, one-way, observatory access road.

If these conditions are not met, I understand I will be in violation of the terms of the Special Use Permit issued to the University of Arizona.

ORIENTATION COPY

Emergency Contact Phone Numbers:

24 HOUR EMERGENCY # 911

LBTO:

520-626-1466

928-428-4286

	<u>Cell #</u>
John Little – OBS Manager	520-488-8676
Kevin Newton-Asst. OBS Mgr.	520-235-1273
Jeff Urban – Asst. OBS Mgr.	520-603-4146
Michael Wagner – Asst. OBS Mgr.	520-488-4452
John (Jay) Prothro – Technician	928-322-3470
Christain Veillet – Director	520-349-4576
John Hill – Technical Director	520-488-7449

U of A Police Department:

Dispatcher (Tucson)

520-621-8273

MGIO:

	<u>Cell</u>
Eric Buckley - Director	928-965-3004
Shane Olsen – Operations	928-965-3102
Duty Person	928-965-3100

SMT:

Tom Folkers	520-626-7837(office)	520-909-1113
Robert Moulton	520-327-0993(home)	

VATT:

520-626-6365