



Welcome to the Mt. Graham International Observatory

<http://mgio.arizona.edu>

Updated 9/30/2014

The Mt. Graham International Observatory (MGIO) is operated under a special use permit with the U.S. Forest Service (USFS). To comply with that permit, all personnel accessing the MGIO site must have USFS authorization to enter the endangered Mt. Graham Red Squirrel refugium. Advance notice of your visit to MGIO is required in order to obtain your permit. **The USFS requires three full non-holiday weekdays to process a permit request.** For example, if you request a permit on a Monday, then the USFS will require Tuesday through Thursday to process the permit (three full days) and provide it to MGIO on Friday.

To clarify, the USFS issues permits to enter the refugium, not MGIO. MGIO assists you in the process starting from the time you notify MGIO you are visiting. MGIO will interact with the USFS on your behalf to request your permit, receive your permit from the USFS, interact with the USFS as needed regarding your request, and have your permit available for you to pick up at Base Camp. MGIO does not have the authority to issue you a permit – only the USFS.

The MGIO Base Camp is located at 1480 West Swift Trail, Safford, AZ 85546. A map is available on the home page of the MGIO website (URL listed above).

To insure smooth access to the observatories and to insure your safety during your MGIO visit, all personnel must check in at the Base Camp to:

1. Log their presence at the observatory (for safety reasons)
2. Pick up their personal refugium permit (if not issued earlier)
3. Acquire an observatory access road gate key
4. Acquire a radio (if vehicle doesn't have one)
5. Seek further instructions (such as weather information, radio instructions, etc.).

In this orientation packet you will find:

1. Observatory Check-In Procedures
2. MGIO Safe Driving Policy & Safety Bulletins
3. Security Information – University of Arizona Police Department
4. MGIO Organization Chart
5. Tips from the Custodial Department
6. Milepost Log to Mt. Graham International Observatory
7. Radio Instruction Sheet & Radio Unit assignment list
8. Mt. Graham Red Squirrel Briefing
9. Emergency Contact Phone Numbers

MGIO Duty System:

To respond to unusual situations, Mt. Graham International Observatory has a duty system where a MGIO employee is on call around-the-clock. They can be contacted through the duty cell phone #928-965-3100. This is to address any problems on site such as utility problems, snow removal, or maintenance issues.

For other problems contact the appropriate Observatory Manager:

Organization	Name	Radio ID	Phone
LBT:	John Little	Unit #75	(928) 428-4286
MGIO:	Shane Olsen	Unit #31	(928) 428-2739
SMT/ARO:	Tom Folkers	Unit #98	(520) 626-7837
VATT:	Bob Peterson	Unit #12	(520) 621-5136

Or see the emergency contact list for additional phone numbers (page 14 of this document).

Base Camp:

Working hours: 7:30 AM – 4:00 PM
Monday through Friday except holidays

Phone number (928) 428-2739

If you will be visiting MGIO during holidays, weekends or after hours please contact the Base Camp staff during regular working hours to make special arrangements to pick up keys, radios, and permits during Base Camp closure periods.

MGIO Website:

<http://mgio.arizona.edu>

Observatory Check-In Procedures

Keyless Entry

The Base Camp is accessed via keyless entry through the personnel gate and the front door to the office. ***You must have the proper code to enter the personnel gate and the office.*** Red squirrel refugium permits, the access road gate keys, and radios are located inside the MGIO office. Should the batteries fail in the keyless entry system, there is a telephone and a facility key for the back door located in the lock box outside the office. The key is attached to a big washer (see picture). Please replace the key in the lock box for the benefit of the next person.

Typically, those going to MGIO are to enter the office via the keyless entry, log in/out (or move their brass tag), and pick up or drop off their permit, radio and access road key.

Observatory Register

For safety reasons we need to know who is on the mountain and where employees, observers, visitors and contractors are located. A registration log located by the door on the podium is where one should log their presence (or absence) on the mountain. For those personnel who have been issued a permanent radio call sign, a “brass tag” system is used instead of the register. The tag board has brass tags that have the employees radio unit call number punched into the tag. They can sign in or sign out by “moving their brass” to the appropriate column on the MGIO Tag Board.

Red Squirrel Refugium Permit

Once you have entered the office, check the folder boxes attached to the wall next to the podium. The boxes will have the current week of permits for visitors, observers, contractors and employees. There is a box for each day of the week: Monday through Sunday. Your permit will be located in the box – same date as you requested for your arrival.

As required by the Federal Endangered Species Act, all visitors that pick up a permit must read and sign the “red squirrel briefing”. The briefing is located next to the podium in front of the permit folder boxes.

Photos of the check-in system are included on the following pages.

Observatory Check-In Procedures



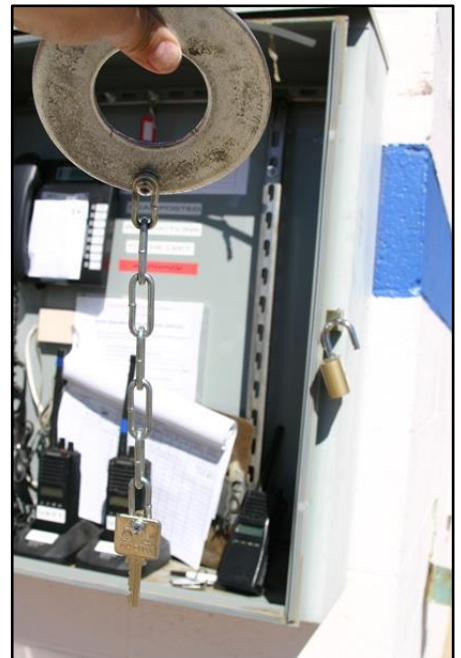
Keyless entry



Exterior Lock Box



Lock box open – Phone and Facility Key





Observatory Check-In Procedures

Daily Permit Boxes,
Podium and Tag Board



MGIO SAFE DRIVING POLICY

The MGIO Council endorsed the following policy for all users of MGIO including staff, visiting observers and contractors. All new personnel that travel to MGIO are required to complete a safe mountain driving orientation session that can be completed on line and sign a statement that they understand their responsibility to drive safely on Swift Trail and the MGIO Access Road before they will be authorized to drive to the telescopes site. Completion of the safe mountain driving orientation is required of new employees to obtain an annual Mount Graham Red Squirrel Refugium Permit and the permit will not be issued until after the signed statement has been received. The orientation will include an introduction to MGIO policies and procedures and a Power Point presentation concerning mountain travel and driving skills required for safe operation on a high altitude mountain road. Individuals may printout materials included in the orientation. A "refresher" package will be made available so that each Observatory Director may require an individual to review the safe mountain driving information to continue driving privileges to a telescope site. Current staff is encouraged to review the safe driving material.

The MGIO Base Camp Office provides a "brass tag" sign in and out system for those persons assigned a permanent radio call sign. All personnel that are frequent visitors and have an assigned radio call sign are required to use the brass tag sign in and out procedure. Visitors who do not have a "brass tag" assigned to them will sign in at the podium registration log and obtain a radio and or keys as they have in the past. In addition, the Office will provide a message board in the near vicinity that will include current safety information, hazardous road conditions, policy changes, weather information, radio communication information and general information regarding MGIO. In addition, more general driving and safety policy changes will be broadcast through the MGIO email exploder and road conditions through the MGIO text message alert system.

After dark travel is highly discouraged to and from the site and will be made only when absolutely required. For after dark travel, it is strongly recommended that a buddy system be used which may include a convoy of vehicles or a minimum of two people in one vehicle. For after dark travel it is required: 1. A fully operational two-way radio and to be in contact with another local person for the entire time of the travel between the site and Base Camp. Each Observatory control room will have a two-way radio to assist with contact in after dark travel. 2. From November 15 to April 15, when the USFS closes Swift Trail to public travel, four wheel drive vehicles will have with properly sized snow chains available for all four wheels (with chains mounted to the tires if driving in snow). 3. A survival pack as defined in the Steward Observatory Safety Manual, Policy #42 will be available in each vehicle.

Penalties are under the control and direction of each Observatory Director for staff reporting to the assigned research facility and will include: 1. First infraction, a verbal warning and the individual must attend a driver's safety class. 2. Second infraction, a written warning including notation in the annual performance review. 3. Third infraction, revocation of driving privileges to the site for three months and placed on probation status. Any penalty will last for one year after the most recent incident. A significant and serious infraction may supersede the policy above and may result in loss of all driving privileges and subject the individual to other penalties up to and including discharge from employment.

MGIO SAFETY BULLETINS

Winter Mountain Driving

During the winter the road surface can become extremely hazardous covered in "black" ice or packed snow. The road is maintained by Arizona Department of Transportation (ADOT) and the MGIO maintenance crew. Typically ADOT takes care of the paved road surface and MGIO takes care of the unpaved road (last 8 miles to the site). **Be aware that the snow plowing operation produces "soft" shoulders on both sides of the road surface.** The road may seem wider because of the soft shoulders so to avoid being stuck stay "centered" on the road surface and be alert to oncoming traffic. During the winter please check with the Base Camp to ascertain road conditions. When weather advisories are critical, an up to date weather and road advisory will posted at the "sign-in" register in the Base Camp Office.

Snow Plowing Procedures

During winter when snow and ice are on the road surface, the Arizona Department of Transportation (ADOT) will plow the paved road (~20 miles). MGIO personnel plow the unpaved road into the observatory site (~8 miles). When plowing, for personnel and equipment safety, ADOT will normally have the road blocked. ADOT personnel will open the gate and escort you through the snow plow closure area at least every 30 minutes, so during snow plowing operations, a short wait may be necessary on your travel to or from the MGIO site. Once you reach a gate closure, contact the Base Camp (radio Unit 30), and they will alert ADOT to your presence at the closed gate. Be sure to continue to monitor radio traffic on "Channel 1" (Motorola radios) or "MGIO Rptr" (Kenwood and ICOM radios). "Rptr" is an acronym for "repeater."

MGIO SAFETY NOTICE, continued

Snow Plowing Procedures, con't

During snow plowing operations when you leave the MGIO site or when you are heading toward the site and pass through the gate at the end of the paved road please advise all MGIO personnel via radio that you are traveling on the unpaved road.

If you should come upon a snow plow – **STOP** - giving them wide berth (>100 feet) until you have made **positive** contact with the plow driver – **the driver will permit you to proceed when the plow has been stopped and safely secured.**

Ice and Snow Fall from Building Roofs

During winter operations at the telescope site, be aware of snow and ice accumulation on all building roofs and in the vicinity of the microwave antenna located at the south end of the Vatican Observatory building. The snow and ice may slide off, causing damage to vehicles parked near the structures. Be cautious around the Submillimeter Telescope, as the roof panels are opened, the ice and snow pack will slide off into the area around the SMT. **Any personnel walking near the outside perimeter of any of the buildings or near the microwave antenna could be endangered by falling snow and ice. Be alert!**

For your safety, check with the personnel in the appropriate building prior to working outside the perimeter of that building (this includes all work – security checks, reading utility meter, etc.) Also be aware at all times of the enclosure opening status when you are working near the perimeter of the building. Snow and ice sliding off the roof or from the microwave antenna can be life threatening.

MGIO SAFETY NOTICE, continued

Emergency Transport Vehicle

MGIO has a 4x4 Suburban, equipped with snow chains, basic first aid supplies, and radio communications. It is available on site to transport an incapacitated person to meet an ambulance, deliver the person to a helicopter pick-up point or make a complete trip to a medical facility. The medical kit in the transport vehicle is composed of blood pressure and heart/lung monitoring equipment, oxygen supply, backboards, cervical collars, splints and basket stretchers.

Note: There is not enough vertical space in the Suburban emergency transport vehicle to accommodate a patient with cardiopulmonary problems which require cardiopulmonary resuscitation (CPR).

Emergency Response Contingency Plan

MGIO has an Emergency Response Contingency Plan. The Plan covers a number of contingencies at the MGIO site such as chemical spills, hazardous materials, fire, and evacuation guidelines. Each building at MGIO has a copy of this plan found in a 3-ring binder. The plan is also listed on the MGIO website at:

http://mgio.arizona.edu/sites/mgio/files/mgio_ercp_2012.pdf

Please read the plan as time allows. It contains emergency instructions, contact names and phone numbers.

MGIO updates the Contingency Plan every two years.

If you have any questions regarding the Emergency Response Contingency Plan please contact the Base Camp at 928-428-2739.

Mt. Graham Unit

The police officers of the University of Arizona Police Department (UAPD) have statewide police authority and are the primary law enforcement and public safety responders on all university property on Mt. Graham. They additionally work in conjunction with other law enforcement authorities to provide support services for criminal and vehicle traffic enforcement on other areas of Mt. Graham. UAPD officers also provide emergency medical services, (EMT), and fire suppression support as needed.

The University of Arizona property on Mt. Graham consists of the Steward Observatory Base Camp, (1480 W. Swift Trail), the Emerald Peak observatory site, (MGIO), which includes the LBTO, SMT, VATT and support structures within the roped off area, the access road/staging area, the biology camp, and the electric power line corridor.

All employees and visitors to the MGIO must adhere to the following:

1. Possess a UofA CAT card (UofA Employees), and Red Squirrel Refugium permit, and present them to UAPD officers upon request.
2. Comply with state and federal laws, and rules and regulations of the University of Arizona and Arizona Board of Regents.
3. Timely reporting of crimes, violations of rules/regulations, serious personal injury, extensive damage to property/facilities, suspicious activity/people and dangerous animals at the MGIO site, to UAPD.
4. Securing of buildings, doors, pad locks, gates, property, or other securing devices/facilities upon use.
5. Follow lawful instructions from UAPD officers.
6. Report vehicle accidents involving any injury or damages exceeding \$1000.00 dollars.
7. Consumption of alcoholic beverages is permitted only within the designated living areas, (not defined as work centers), of the LBT, SMT, and VATT observatories, and by only those who are of legal age.

Four UAPD Police Officers are presently assigned to the MGIO Division and are available throughout the week 24 hours/day. Officers are designated as "STAR" units, (e.g. STAR 2 thru 5,), and can be contacted either via the MGIO radio or at one of their two offices (928) 348-0001. The UAPD division offices are located at the UofA's Base Camp facility, (1480 W. Swift Trail), and at Emerald Peak, centrally located as you arrive at the MGIO site. In the event a police officer is not immediately available, the University of Arizona Police Dispatcher is able to contact them for call-out basis at (520) 621-8273.

Weapons at MGIO

Arizona Board of Regents policy, 5-302 to -303, prohibits the use, possession, display or storage of any weapons, explosive device, or fireworks on The University of Arizona campus and on all land and in all buildings owned or under the control of The University of Arizona on behalf of the Arizona Board of Regents. No concealed carry permit exempts a person from this policy.

For the purpose of this policy the following definitions will apply.

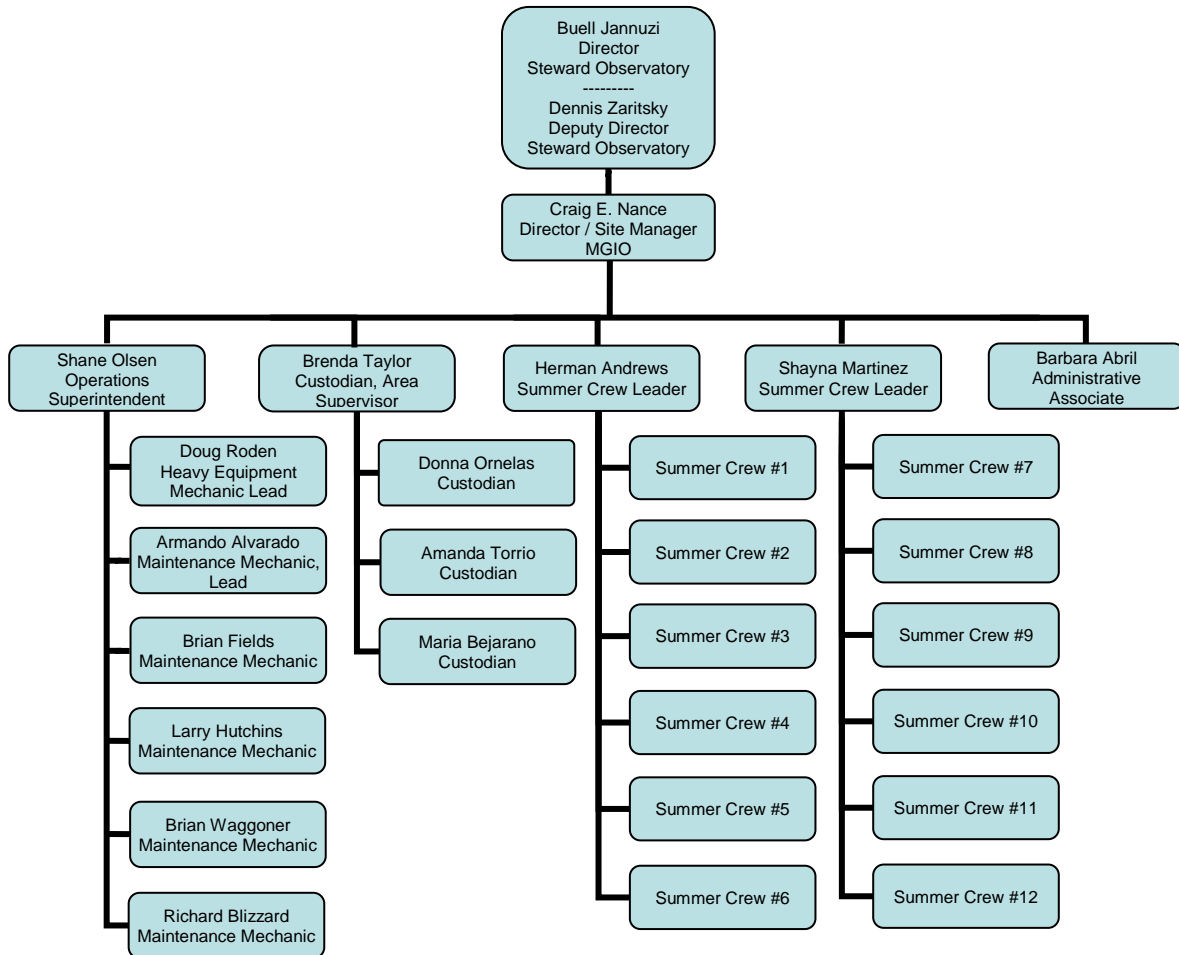
- **Weapon:** Any object or substance designed to inflict a wound, cause injury, or incapacitate, including without limitation all firearms, BB guns, air guns, pellet guns, switchblade knives, knives with blades five inches or more long and chemicals such as mace, tear gas or oleoresin capsicum, but excluding normally available over-the-counter self-defense repellents. Chemical repellents labeled "for police use only" or "for law enforcement use only" may not be possessed by the general public.
- **Fireworks:** Any fireworks, fire crackers, sparklers, rockets or any propellant-activated device whose intended purpose is primarily for illumination.
- **Explosive:** Any dynamite, nitroglycerin, black powder or other similar explosive material including plastic explosives; any breakable container that contains a flammable liquid with a flash point of 150 degrees F or less and has a wick or similar device capable of being ignited.

Additional information may be found at the University of Arizona Police Department's website:

<http://www.uapd.arizona.edu/>

Mount Graham International Observatory

A division of
Steward Observatory
University of Arizona
August 2013





Welcome to MGIO

Tips from the Custodial Department

During your stay, you should expect to find a clean facility. Custodial Services are provided on site – Monday through Friday
8:00 a.m. to 3:00 p.m.

Base Camp hours are 6:00 a.m. to 4:30 p.m.

Telephone: (928) 428-2739.

Please leave a message after 4:30 p.m.

Emergency telephone numbers are posted near each telephone.

MGIO User's Guide

Please sign in with length of stay at the message center found in the entry area of each of the onsite buildings.

- **The Kitchen:** Equipped with pots, pans, baking pans, dishes, glasses, cups, flatware, and storage containers. Paper plates and Styrofoam cups, coffee, sugar, creamer, and basic condiments are also provided for your convenience.
- **Food:** Each user supplies their own food in ample amounts to accommodate their stay. Do not leave open food on counters. Store in containers, cabinets, or the refrigerator. (This is a precautionary effort to control pests). **It is the user's responsibility to prepare their meals and, as a courtesy to the next user, to clean up after themselves. Label your food with your name or initials and date.** At the end of your stay, discard all unwanted or cooked food. If you wish to leave it for another's use, label it "free". This applies to all food in cabinets or the refrigerators/freezers.
- **Water:** Use bottled water only for drinking, cooking, and to refill the ice trays. For SMT and VATT, bottled water refills are found in the entry area. At LBT, bottled water refills supplied by LBT personnel, are found in the kitchen. SMT and VATT - please notify Base Camp for potable water bottle refills.

- **Stove: DO NOT leave heating pans unattended.** Use lids or splatter screens while preparing food. Wipe up spills and splatters.
- **Oven:** Cover what you are cooking with aluminum foil, or use a baking dish with a lid.
- **Microwave:** Cover what you are cooking with plastic wrap, a paper towel, a paper plate, or use a baking dish with a lid. **DO NOT use metal pans or aluminum foil in this appliance.**
- **All Small appliances:** Unplug or be sure that they are turned off.
- **Dishwasher:** Load and wash soiled dishes before you leave. Dishwashing supplies are found under the sink.
- **Rooms:** Linen, towels, pillows and blankets are stored in the closet. Extra linen and towels are stored in the Linen cabinet found in the entry. Also found in linen storage is tissue and personal hygiene products. At the end of your stay remove soiled linen from your bed, soiled towels, and place in hamper located in the building. If linens are not removed, the room will be considered occupied. When leaving, please vacate LBT rooms by 10:00 AM. Thank you for your thoughtfulness and consideration.
- **Laundry:** Services are only provided for bedding, linen and towels.
- **Trash:** Pickup is Monday through Friday. Over flow is to be placed in the large trash container found in the entry area. **DO NOT place any trash outside the building.**

The MGIO Custodial Department thanks you for your cooperation!

Maria Bejarano, Custodian
Donna Ornelas, Custodian
Amanda Torrio, Custodian
Brenda Taylor, Custodial Area Supervisor

Please email comments or suggestions to
brendab1@email.arizona.edu

SWIFT-TRAIL ROAD REFERENCE MARKERS

Arizona Highway 366 (Swift Trail) provides access to within two miles of the Mt. Graham International Observatory (MGIO). Landmarks and mile posts are located along Swift Trail and are listed below:

<u>Location</u>	<u>Milepost Marker</u>	<u>Miles from Base Camp</u>
MGIO Base Camp	114.7	0
Marijilda Canyon Road Intersection	116.8	2.1
4,000' Elevation Marker	117.5	2.8
Coronado Forest Boundary	118.5	3.8
FR-861 Road Intersection (Heliport)	119.5	4.8
FR-667 Road Intersection – USFS Work Site (5,000' elevation) ...	120.4	5.5
Noon Creek crossing	121.0	6.2
FR-329 Road Intersection – Angle Orchard	121.4	6.4
Round the Mountain Trailhead turnout	121.5	6.5
6,000' Elevation Marker	123.3	8.3
Wet Canyon Bridge	123.6	8.6
Arcadia Campground	125.5	10.4
Cluff Dairy Turnout (Heliport)	126.2	11.0
7,000' Elevation Marker	126.6	11.4
Turkey Flat (old general store)	127.9	12.7
Twilight Campground Road Intersection	128.4	13.2
8,000' Elevation Marker	130.1	14.9
Lady Bug Saddle (8,508' Elevation)	131.0	15.8
Utility Corridor	132.1	16.9
Hagens Point (The Kitchen)	133.3	17.9
9,000' Elevation Marker	134.5	19.1
Snow Flat Campground Road Intersection	135.2	19.8
Shannon Campground & Heliograph Peak Road Intersection	135.8	20.4
FR-507 Intersection (High Peak)	136.1	20.7
Swift Trail (Hwy 366) Main Gate	136.2	20.8
Treasure Park Road Intersection	137.0	21.6
Hospital Flat Campground (Alternate Heliport)	137.2	21.8
Grant Hill Intersection	137.8	22.4
Grant Creek crossing	139.2	23.6
Cunningham Campground	139.9	24.3
Moonshine Creek crossing	140.6	25.0
Post Creek crossing	141.4	25.8
Ft. Grant Vista Overlook	141.8	26.2
MGIO - Emerald Peak Access Road Intersection	142.3	26.7
Old Columbine - Bible Camp Road Intersection (Heliport)	143.2	27.6
Public Horse Corral	143.3	27.7
Soldier Creek Campground	143.7	28.1
Peters Flat	144.3	29.0
Chesley Flat	145.5	30.2
FR-287 Riggs Lake Road Intersection	147.5	32.2

MGIO Radio & Winter Travel Instructions

October 2012

Following are instructions for all MGIO radio users:

- Make sure that the radio is turned on and you have selected Channel #1 or "MGIO RPT" (MGIO radio repeater, located on Heliograph Peak). Do not use any other channels except in an emergency. The listing of channels is on the bottom of this sheet.
- On Motorola Radios: The small toggle switch (scan switch) on the top of the hand-held radio should be to the left for normal operation (position "A").
- When you arrive at the one-way MGIO access road and pass through the access road gate you will need to call up for traffic clearance. Example follows:

"One (?) vehicle(s) to proceed up the access road – downhill traffic advise." If there is no response you then say **"One (?) vehicle(s) proceeding up the access road."** You would use the same text for going downhill, just reverse the directions. Be aware, there may still be traffic on the access road. Drive with extreme caution. Be sure to "squawk" your radio identification code at the end of transmission – FCC regulation!

- During winter when snow and ice are on the road surface, the Arizona Department of Transportation (ADOT) will plow the paved road (~20 miles). MGIO personnel plow the unpaved road into the observatory site (~8 miles). When plowing, for personnel and equipment safety, ADOT will have the road blocked. ADOT personnel will open the gate and escort you through the snow plow closure area at least every 30 minutes, so a short wait may be necessary on your travel to or from the MGIO site. Once you reach a gate closure, contact the Base Camp (radio Unit 30), and they will alert ADOT to your presence at the closed gate. Be sure to continue to monitor radio Channel 1 (MGIO radio traffic). During snow plowing operations when you leave the MGIO site heading down or pass through the gate at the end of the paved road heading up please notify MGIO personnel via radio, alerting them that you are moving through the unpaved section of roadway.

RADIO CHANNEL NUMBERS:

CHANNEL DESCRIPTER

Motorola	Kenwood & ICOM	
Motorola Radios Channel 1 through 16	1 MGIO RPT	(MGIO Repeater Heliograph Peak) PRIORITY CHANNEL
	2 MGIO TA	(MGIO Repeater Bypass – limited range)
	3 MGIO LOC	(MGIO Simplex Communications)
	4 GCSO 1	(Graham County Sheriff #1)
	5 GCSO 2	(Graham County Sheriff#2 Repeater Heliograph Peak)
	6 ADOT RPT	(Arizona Dept of Transportation Repeater Heliograph Peak)
	7 ADOT LOC	(Arizona Dept of Transportation Simplex Communications)
	8 USFS RPT	(Forest Service Heliograph Peak Repeater)
	9 USFS WPK	(Forest Service West Peak Repeater)
	10 USFS LOC	(Forest Service Limited Range)
	11 USFS NET	(Forest Service Fire NET)
	12 KPNO	(Kitt Peak National Observatory Mountain Operations)
	13 SO-FLWO	(Steward Observatory Operations)
	14 FLWO	(SAO- Mt. Hopkins Operations)
	15 STATE	(Arizona Emergency)
	16 USA	(National Emergency)
	17 NWS RPT	(National Weather Service)
	18 SW AMB	(Southwest Ambulance)

MT. GRAHAM INTERNATIONAL OBSERVATORY

Radio System Unit Assignments

Revised 9/30/2014

Unit #	Assigned to:	Unit #	Assigned to:	Unit #	Assigned to:
	Tucson Admin/Base Station	80	A.R.O. 10-M Telescope		LBT (con't)
10	Buell Jannuzi	80	Visitor (site)	75	John Little
11	Craig Nance	81	Lucy Ziurys	75-Alpha	Michael Wagner
12	Bob Peterson	82		75-Bravo	Bonnie Ferguson
13	Barbara Abril	83	Martin McColl	75-Charlie	Terry Forsyth
14		84	Mark Metcalfe	75-Delta	Vince Blair
20	Kitt Peak Base	85	David Forbes	75-Echo	Richard Hansen
21	Bill Wood	86	Robert Moulton	75-Foxtrot	John Prothro
22	Gary Rosenbaum	87		75-Go Daddy	Kevin Newton
23	Joe Hoscheidt	88		75-Hotel	Bruce Bingham
24		89	SMT0 Tucson (Tom Folkers)	75-India	Jared Schuh
30	Safford Base (Barbara)	90	Sean Keel	75-Juliet	Chris Bolyard
31	Shane Olsen	91	Amy Robertson	75-Kilo	Jeff Urban
32	Armando Alvarado	92		75-Lima	Tommylee Ison
33	Brian Waggoner	93	Eugene Lauria	75-Mike	James Dougherty
34	Douglas Roden	94	Bob Freund	75-November	LeRoy Durham
35	Rick Blizzard	95		76	Dave Ashby
36	Brian Fields	96	George Reiland	76-Alpha	Amjad Chatila
37	Larry Hutchins	97	Patrick Fimbres	76-Bravo	Matt Cichon
38	Brenda Taylor	98	Tom Folkers	76-Charlie	Mike Gusick
38-Alpha		99	John Downey	76-Delta	James Howard
38-Bravo	Donna Ornelas			76-Echo	Gene Holmberg
38-Charlie	Amanda Torrio	70	LBT	76-Foxtrot	Jim Wiese
38-Delta	Maria Bejarano	70	Christian Veillet	76-Golf	Robert Reynolds
39	BB Andrews	70-Alpha	John Hill	76-Hotel	Conrad Vogel
39-Alpha	Shayna Martinez	70-Bravo		76-India	Frank Dionies
				76-Juliet	James Riedl
40	Mt. Lemmon Base	71	Al Conrad	76-Kilo	Jonathan Kern
41	Jim Grantham	71-Alpha			
42	Steve Bland	71-Bravo		77	Julian Christou
43	JD Berryman			77-Alpha	Doug Miller
		72	Subcontractor	77-Bravo	Lee Dettmann
50	Biologists	72-Alpha		77-Charlie	Juan Carlos Guerra
51	John Koprowski	72-Bravo		77-Delta	
52	Vicki Greer			77-Echo	
53	Melissa Merrick	73	Douglas Summers	77-Foxtrot	Michael Lefebvre
53-Alpha		73-Alpha	Michele DeLaPeña	77-Golf	Gustavo Rahmer Bass
53-Bravo		73-Bravo	Chris Biddick		
54	Hsiang Ling-Chen	73-Charlie	Joseph Astier		
55	Maria Altemus	73-Delta	Tom Sargent	78	Mark Wagner
56	Kaitlyn Snarski	73-Echo	Dan Cox	78-Alpha	Dave Thompson
56-Alpha	Luis Martinez	73-Foxtrot	Doug Fisher	78-Bravo	Olga Kuhn
57	Tim Jessen	73-Golf	Kellee Summers	78-Charlie	Michelle Edwards
58	Allyssa Killanowski	73-Hotel	Taras Golotas	78-Delta	Barry Rothberg
59	Caitlin McCurry	73-India		78-Echo	Steven Allanson
59-Alpha	Jonathan Derbridge	73-Juliet	Stephen Hooper	78-Foxtrot	Geno Bechetti
		73-Kilo		78-Golf	David Gonzalez Huerta
		73-Lima		78-Hotel	Tim Shih
60	Vatican Obs. (Emer. Peak)			78-India	
61	Paul Gabor	74	ETS	78-Juliet	
62	Michael Franz	74-Alpha		78-Kilo	Jenny Power
63	Gary Gray	74-Bravo		78-Lima	Elliott Solheid
64	Technical Division			78-Mike	John Morris
65	Ken Duffek				
66	Jose Funes	Star Units	UAPD	79	Visiting Teams
67	Guy Consolmagno	Command 2	Robert Sommerfeld	79-Alpha	Arizona
68	Rich Boyle	Star 2	Ron Smallwood	79-Bravo	LBTB/Germany
69	Chris Corbally	Star 3	Jerry Garcia	79-Charlie	INAF/Italy
		Star 4	Wade Boltinghouse	79-Delta	Ohio State
		Star 5	Lance Lines	79-Echo	Research Corporation

MT. GRAHAM RED SQUIRREL BRIEFING

The endangered Mt. Graham red squirrel is protected by the Federal Endangered Species Act of 1973, as amended. It is illegal to "take" (this means to harass, harm, pursue, hunt, shoot, wound, kill, trap, capture, or collect, or to attempt to engage in any such conduct) individuals of this species. This includes touching and feeding. If anyone "takes" (as defined above) a Mt. Graham red squirrel, they may be subject to prosecution under the Endangered Species Act.

Report all squirrels wounded or harmed to the first available Forest Officer. The Forest Service will report all dead or wounded squirrels to the US Fish and Wildlife Service. Locations of killed squirrels should be immediately reported to the Forest Service so that the dead squirrel can be collected and preserved for study.

There is some concern that the squirrels could become dependent on human food, which in turn may reduce survival. Be sure that you properly dispose of all trash. Do not put food items in the construction materials dumpsters at the telescope site.

There are Mt. Graham red squirrels near many Pinaleño Mountains roads. The squirrels do cross roads, so drive slowly and carefully to avoid hitting any Mt. Graham red squirrels.

You are to keep your personal permit with you at all times. Permits are issued by the U. S. Forest Service through Mt. Graham International Observatory Base Camp.

MGIO SITE & VEHICLE PERMIT REQUIREMENTS

I have read and understand the Site / Vehicle Permit requirements and the conditions under which they are issued:

- I will remain inside the clearing limits of the MGIO facilities (delineated by a yellow perimeter rope).
- I will not go beyond the clearing limits (boundaries) of the two-mile, one-way, observatory access road.
- I will not use this permit for any purposes than those stated on my permit.

If these conditions are not met, I understand I will be in violation of the terms of the Special Use Permit issued to the University of Arizona.

Keep vehicle permit on the dash facing up for security to verify.

ORIENTATION COPY

MGIO

Emergency Contact Phone Numbers:

Updated 9/30/2014

24 HOUR EMERGENCY # 911

UAPD: **24 Hour** **520-621-8273**
 Tucson Fax **520-626-9461**
 Safford Office **928-348-0001**
 Safford Fax **928-348-0206**

<u>Unit</u>	<u>Home #</u>	<u>Cell #</u>	<u>Weekend</u>
UAPD Dispatch	520-621-8273	-	
CMD 2 R. Sommerfeld	-	520-237-7311	
* 2 -R. Smallwood	-	928-965-4302	
* 3- G. Garcia	-	928-965-4303	
* 4- W. Boltinghouse	-	928-965-4304	
* 5- L. Lines	-	928-965-4305	
MGIO Duty Person	-	928-965-3100	
MGIO Base Camp		928-428-2739	
SMT	520-621-4328	-	
VATT	520-626-6365	928-965-1006	
LBT Duty Person	-	520-909-8443	
LBT (Safford line)	928-428-4286	-	
LBT (fax)	928-828-1191	-	
LBT (Tucson line)	520-626-1466	-	
Graham County Co-op	928-485-2451	-	
Dick Berryhill GCEC	928-348-3310	928-651-6028	
Network Supervisor	Valley Telecom	800-400-1273	520-678-3988
Rick Dulum	Valley Telecom	520-507-7425	
10 B. Jannuzi	-	520-245-3551	
11 C. Nance	808-345-3842	928-965-3004	
12 B. Peterson	520-760-0076	-	
30 B. Abril	-	928-651-5905	
31 S. Olsen	-	928-965-3102	
32 A. Alvarado	-	928-651-1903	
33 B. Waggoner	-	928-322-3082	
34 D. Roden	-	928-322-3517	
35 R. Blizzard	928-978-5482	-	
36 B. Fields	-	520-831-3723	
37 L. Hutchins	928-359-8791	928-792-6082	
38 B. Taylor	928-428-3467	928-651-7480	
38B D. Ornelas	928-792-2379	-	
38C A. Torrio	928-428-0562	-	
38D M. Bejarano	928-428-5011	-	
63 G. Gray	928-348-7629	928-965-8634	
65 K. Duffek	520-621-7660	520-404-6423	
61 P. Gabor	520-289-4167	520-289-4167	
70 C. Veillet	-	520-349-4576	
70A J. Hill	520-325-3832	520-488-7449	
71 J. Brynnel	520-749-1732	520-488-7448	
75 J. Little	520-743-7663	520-488-8676	
75A			
75B B. Ferguson	928-428-3331	928-651-0607	
75C J. Prothro	928-348-8586	928-322-3470	
75G K. Newton	928-428-1861	928-432-1391	
75K J. Urban	520-297-1683	520-603-4146	
81 L. Ziurys	520-529-0487	520-850-2913	
86 R. Moulton	520-327-0993	-	
98 T. Folkers	520-297-5250	520-909-1113	